

COMMUNITY IMPACT

PORTFOLIO

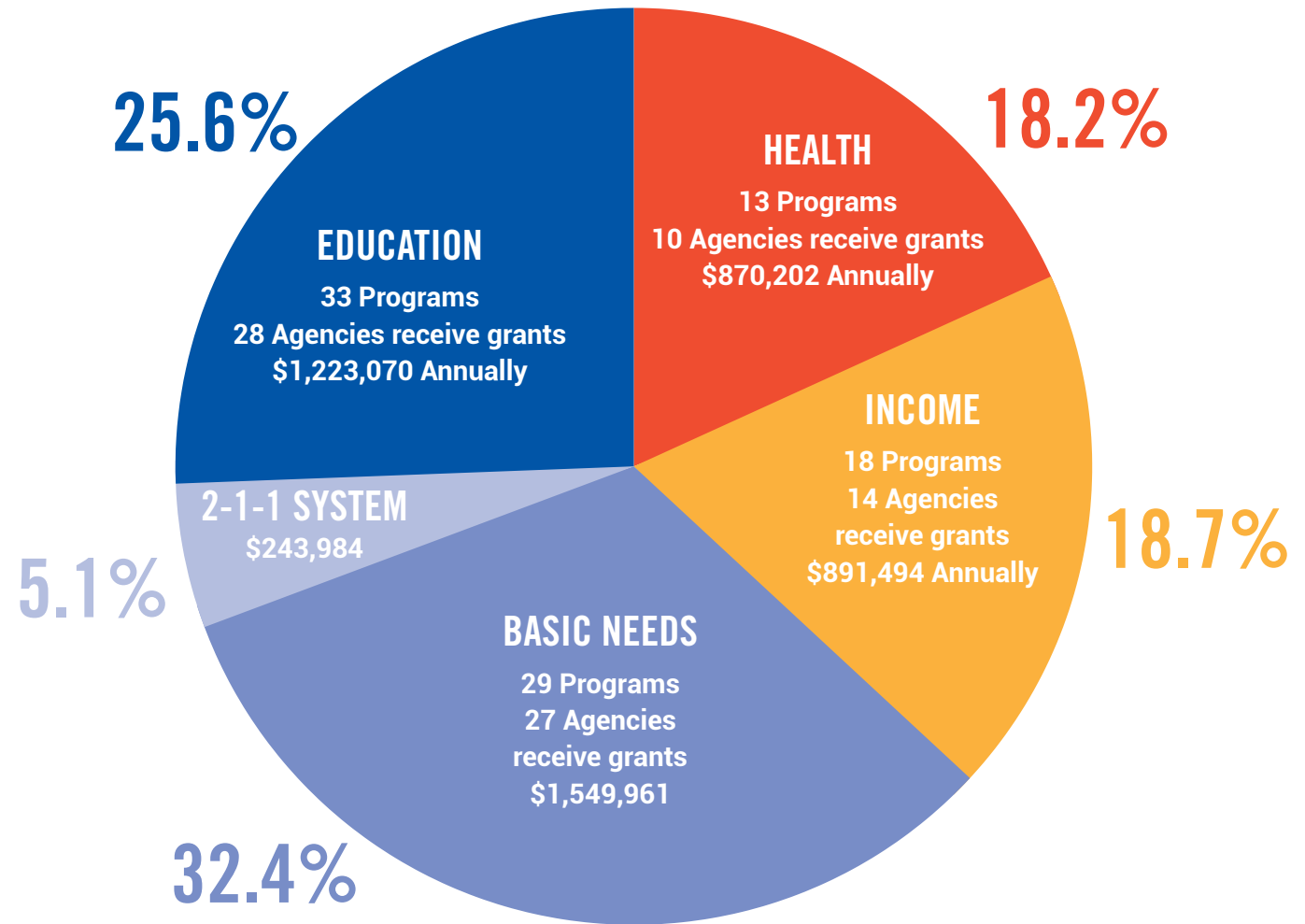
JULY 1, 2021
to JUNE 30, 2022

\$4,778,711 INVESTED

**93 PROGRAMS AT 65 FUNDED
PARTNER AGENCIES**

(Program investments in each community proportionate to the percentage of revenue raised in those communities)

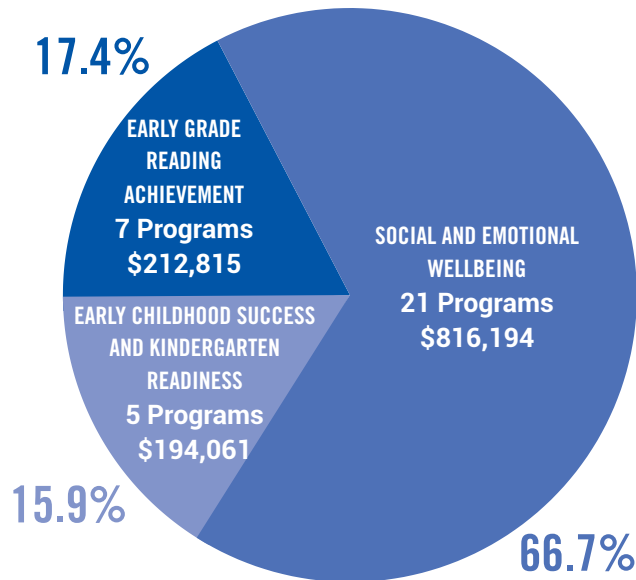
Total Breakdown of the Investment



EDUCATION

GOAL: Improve high school graduation rates and reduce racial and economic disparities in graduation rates

SUMMARY: 33 programs at 28 agencies are receiving strategic grants totaling \$1,223,070 annually.



PRIORITY AREA: Social Emotional Wellbeing

Big Brothers Big Sisters of Southwest Michigan	High School Bigs Mentoring	KZOO
Boys and Girls Clubs of Greater Kalamazoo	Social Emotional Wellbeing	KZOO
Bronson Health Foundation/Sexual Assault Services	Sexual Assault Prevention	BC
Burma Center	THRIVE	BC
Communities in Schools of Michigan	Integrated Student Success	BC
Community Healing Center	Ninas Del Corazon (Girls of the Heart) S.T.R.E.E.T.	KZOO
El Concilio/Hispanic American Council	Academia Azteca	KZOO
GFM The Synergy Health Center	UrbanZone	KZOO
Gryphon Place	Youth Conflict Resolution Program	KZOO
KYD Network	Social Emotional Learning Initiative	REG
New Level Sports Ministries	Youth Village ICan Academy	BC
The Haven of Rest Ministries	Gain Access Program (GAP)	BC
Prevention Works	KPS Program Expansion Project	KZOO
Rootead Enrichment Center	Integrative Social Emotional Learning for High School	KZOO
Southwestern Michigan Urban League	Sojourner Truth Girls Academy	BC
Starr Commonwealth	Starr Commonwealth Resilient Schools Project	BC
The Arc of Calhoun County	Educational Advocacy	BC
Voces	Creative Leaders United	BC
Women's Network Inc/Woman's Co-op	Life Enrichment Classes	BC
Young Women's Christian Association	YWCA Early Childhood Education and Equity Pogram	KZOO

PRIORITY AREA: Early Childhood Success and Kindergarten Readiness

Calhoun Intermediate School District	Great Start Three Year Old Scholarship Program	BC
El Concilio/Hispanic American Council	Escuelita Nuevo Horizonte	KZOO
Kalamazoo County Ready 4s	Kalamazoo County Ready 4s	KZOO
Kalamazoo Regional Educational Service Agency	Seeds for Success—Parents As Teachers	KZOO
Young Women's Christian Association	Northside Preschool	KZOO

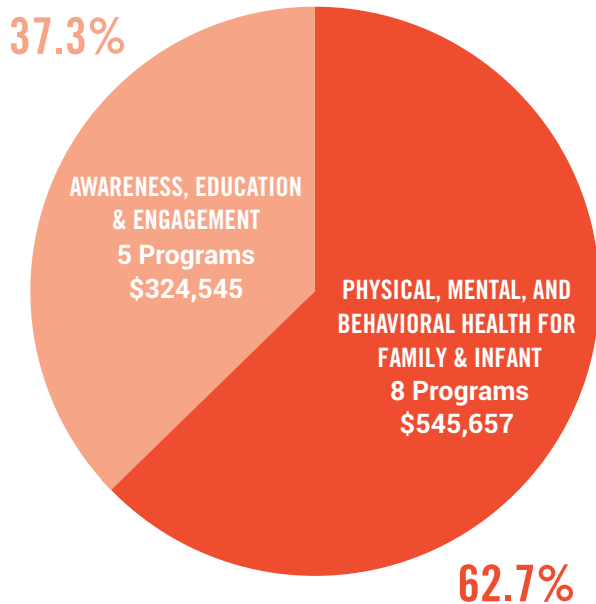
PRIORITY AREA: Early Grade Reading Achievement

Goodwill Industries of Southwestern Michigan	Life Guides	KZOO
New Genesis Incorporated	New Genesis After School Program	KZOO
Read and Write Kalamazoo (RAWK)	RAWK Readers' Room	KZOO
SLD Read	Achieve Success	REG
Southwestern Michigan Urban League	Hip Hop 4 Change	BC
Voces	Elementary Literacy Program	BC
Young Men's Christian Association Kalamazoo	Fall/Winter Program	KZOO

HEALTH

GOAL: Improve family and infant health and reduce racial and economic disparities in related indicators

SUMMARY: 13 programs at 10 agencies are receiving strategic grants totaling \$870,202 annually.



PRIORITY AREA: Physical, Mental, and Behavioral Health for Family & Infant

Catholic Family Services	Caring Network	KZOO
Calhoun County Public Health Department	Nurse Family Partnership	BC
Grace Health	A Coordinated Approach to Care	BC
Gryphon Place	211 Pregnancy/Infant Screening	REG
Kalamazoo County Health and Community Services	Nurse Family Partnership	KZOO
Rootead Enrichment Center	Rootead Continuum Family Enrichment	KZOO
WMU Homer Stryker MD School of Medicine	Cradle Data Backbone	KZOO
Young Women's Christian Association	Community Health Worker	KZOO

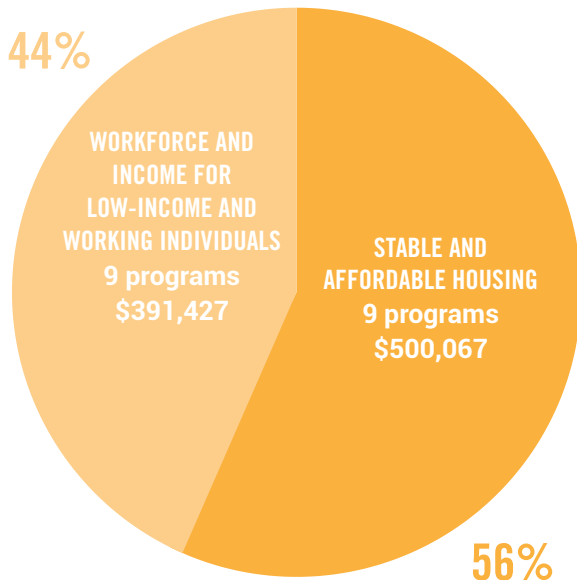
PRIORITY AREA: Awareness, Education & Engagement

Community Healing Centers	Addiction and Prevention Services for Pregnant and Parenting Individuals	REG
Family & Children Services	Coaching Parents for Change: Breaking the Cycle of Abuse and Neglect	REG
Kalamazoo County Health and Community Services	Fatherhood Initiative	KZOO
WMU Homer Stryker MD School of Medicine	Fetal and Infant Mortality Review	KZOO
Young Women's Christian Association	Cradle Kalamazoo	KZOO

INCOME

GOAL: Increase the number of economically stable households in the region

SUMMARY: 18 programs at 14 agencies are receiving strategic grants totaling \$891,494 annually.



PRIORITY AREA: Stable and Affordable Housing

Community Action, BC	Emergency Services–Income	BC
Community Homeworks	Affordable Sustainability for Low-Income Homeowners	KZOO
Housing Resources, Inc	Eviction Diversion	KZOO
	Family Stability for Educational Success Program (Siemer)	KZOO
	Housing Stabilization Partnership	KZOO
Kalamazoo Neighborhood Housing Services, Inc	New Homeowner Services	KZOO
Legal Aid of Western Michigan	Eviction Prevention	KZOO
Legal Services of SC MI	Eviction Diversion/Housing Opportunity	BC
Neighborhoods Inc, of Battle Creek	Federal Home Loan Bank	BC

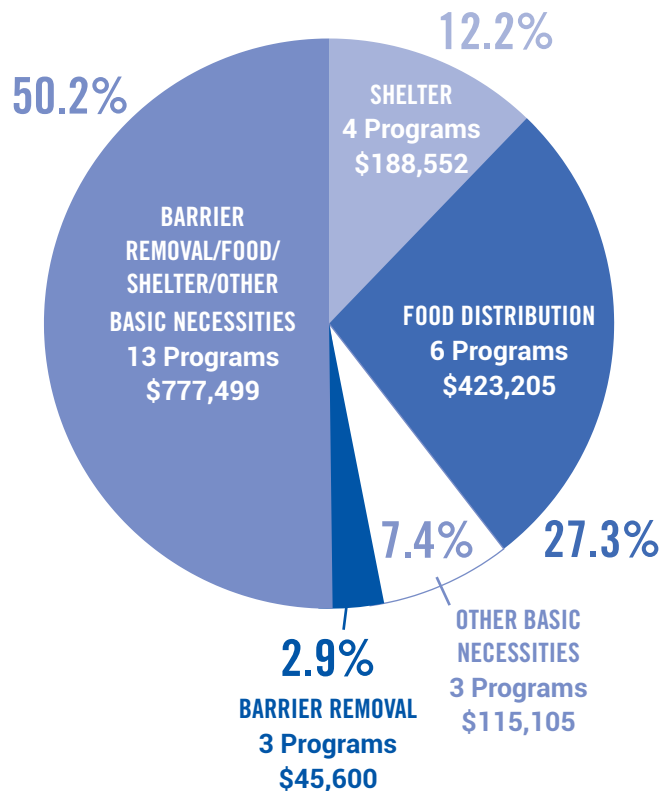
PRIORITY AREA: Workforce & Income Supports for Low-Income and Working Individuals

Goodwill Industries of Central Michigan's Heartland	Financial Opportunity Centers (FOC)	BC
	Volunteer Income Tax Assistance	BC
Goodwill Industries of Southwestern Michigan	Financial Coaching	KZOO
Kalamazoo Regional Educational Service Agency	Volunteer Income Tax Assistance	KZOO
Kalamazoo Regional Educational Service Agency	Career Now	REG
Michigan Works! Southwest	BC Employee Resource Fund	BC
MRC Industries	MRC Employment	KZOO
Urban Alliance	Momentum Urban Employment Initiative	KZOO
Voces	English as a Second Language	BC

BASIC NEEDS

GOAL: Provide a safety net to help individuals and families access basic necessities during times of need

SUMMARY: 29 programs at 27 agencies are receiving grants totaling \$1,549,961.



PRIORITY AREA: Barrier Removal

El Concilio/Hispanic American Council	El Concilio-Bridging Community	KZOO
Kalamazoo Drop-In Child Care Center	Kalamazoo Drop-In Child Care Center	KZOO
Partners in Housing Transition	Partners in Housing Transition	KZOO

PRIORITY AREA: Food Distribution

Battle Creek Public Schools	Breakfast in the Classroom	BC
Senior Services, Inc	Home Delivered Meals	REG
South Michigan Food Bank	Food Distribution	REG
Southwestern Michigan Urban League	H.O.O.D Health Cooperative: Food to Fork Initiative	BC
The Salvation Army-Battle Creek	Emergency Family Services	BC
Tri-County Labor Agency for Human Services, Inc	Tri-County Labor Agency Food Bank Pantry	BC

PRIORITY AREA: Shelter

The Haven of Rest Ministries	Men's and Women's Shelter	BC
The Salvation Army-Kalamazoo	Emergency Utility Assistance	KZOO
Young Women's Christian Association	Domestic Violence Shelter	KZOO

PRIORITY AREA: Other Basic Necessities

Charitable Union	Clothing Children and Families in Need	BC
	Menses Management	BC
St. Luke's Episcopal Church	St. Luke's Diaper Bank	KZOO

PRIORITY AREA: Barrier Removal/Food/Shelter/Other Basic Necessities

American Red Cross of Southwest Michigan	Addressing Community Emergencies	REG
Catholic Family Services	The Ark Services for Youth	REG
Community Action Agency	Emergency Services – Basic Needs	REG
Disability Network Southwest Michigan	Independent Living Services	REG
Family Enrichment Center	Child Care Assistance	BC
Goodwill Industries of Southwestern Michigan	Basic Needs	KZOO
Housing Resources Inc.	HRI Barrier Removal	KZOO
Ministry with Community	Resource Center and Drop-In Program	KZOO
Portage Community Center	Emergency Assistance Program	KZOO
Region 3B Area Agency on Aging (CareWell)	Removing Barriers for All	BC
S.A.F.E Place Shelter	Domestic Violence-Basic Needs	BC
SHARE Center	Community Meals and ID Program	BC
South County Community Services	South County Community Services Basic Needs Services	KZOO

INITIATIVES

UNITED WAY IS INVOLVED IN THE INITIATIVES BELOW:

STATE AND NATIONAL LEVEL

Michigan Association of United Ways
Public Policy Work
ALICE Statewide Steering Committee

BATTLE CREEK

Battle Creek Funders Group
Battle Creek Literacy Subcommittee
BC Vision
Bearcat Health
Calhoun Connect
Calhoun County FEMA Emergency Food and Shelter Program
Calhoun County Response Consortium
Catalyzing Community Giving – The Village
Great by 8! Action Team
Housing Solutions Board (voting member)
Hunger Free Calhoun
Jobs Systems Workgroup
Maternal Infant Health Committee
Population Health Alliance
Purpose Built Communities
The Coordinating Council (TTC) Leadership Council
Truth, Racial Healing and Transformation BC

REGIONAL

Elevate ALICE (formerly known as ALICE Friendly Workplace)
Community Resilience Program Manager
Michigan 211 Board
Volunteer Center of Greater Battle Creek and Kalamazoo

KALAMAZOO

Adjacent Community Committees (UW-led) (Vicksburg, Comstock, Gull Lake, Galesburg)
Cradle Kalamazoo Governance Board
Continuum of Care (UW-led)
Greater Kalamazoo Business Resource Network
Hunger Free Kalamazoo
Kalamazoo County FEMA Emergency Food and Shelter Program
Kalamazoo County Great Start Collaborative
Kalamazoo County Response Consortium
Kalamazoo Funders Group
Kalamazoo Funders Racial Equity Coalition
Kalamazoo Trauma Action Committee
Shared Prosperity Kalamazoo Organizing Committee
Truth, Racial Healing and Transformation Kalamazoo